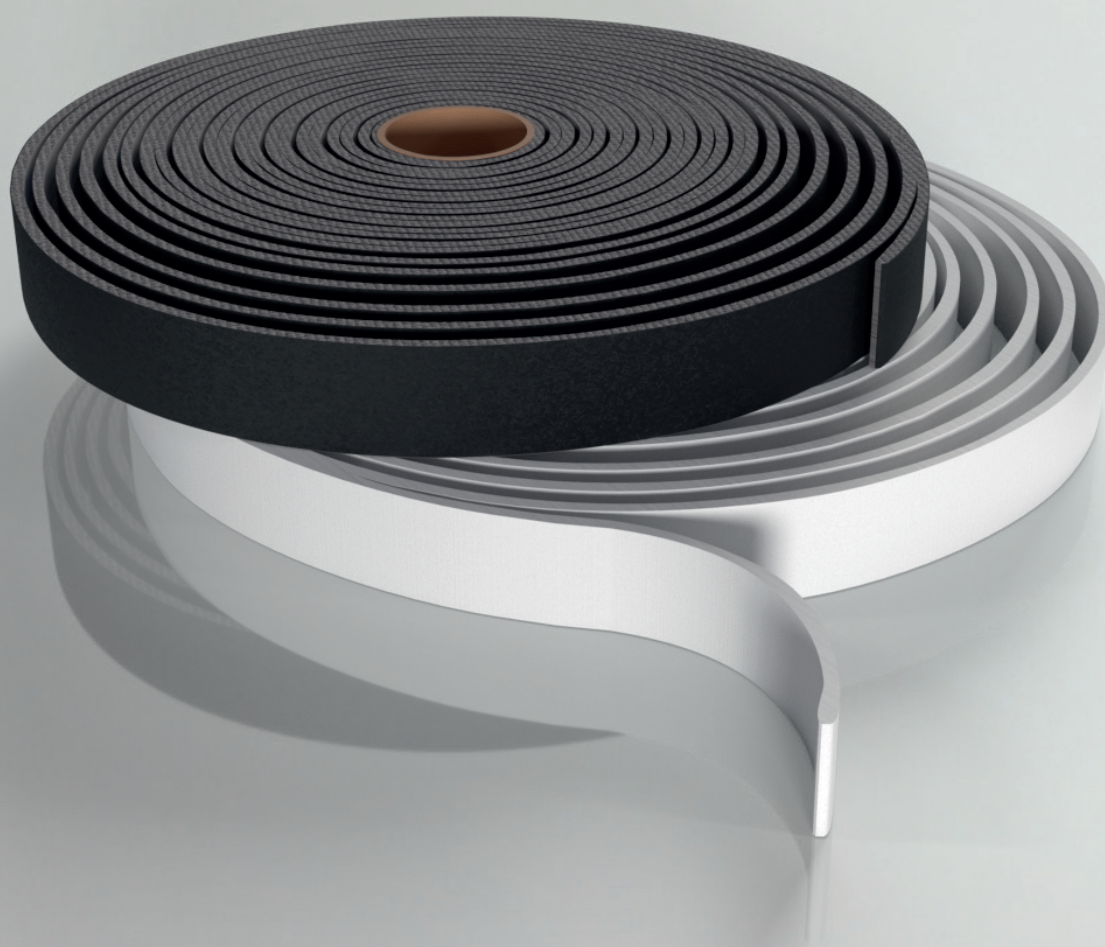


Technical Product Data Sheet

# KERAFIX<sup>®</sup> 2000



kuhnodice | ELNOVIS

Tech. Rev.: 1.0  
Ling. Rev.: 1.0

Product description

KERAFIX® 2000 is a bio-soluble, high-temperature glazing tape made from calcium magnesium silicate. It offers outstanding thermal and physical stability at temperatures of up to 1200 °C. Thanks to its light, flexible and compressible material structure, it is ideal for use in fire-rated glazing systems, as a sealing material for industrial and household appliances and as additional insulation. The material has a bulk density of 200 to 300 kg/m³ and thermal conductivity of 0.036 W/m×K, ensuring efficient insulation. KERAFIX® 2000 is available in different variants, including classic (self-adhesive) or premium (with internal self-adhesive strip) for quick and easy installation. It is delivered in rolls or strips with individually adaptable dimensions in accordance with DIN standards.

Reaction to fire

Class B2 (DIN 4102-1)

Properties

- Bio-soluble and environmentally friendly
- Thermal stability up to 1200 °C
- Flexible, light and compressible material structure
- High thermal insulation performance with thermal conductivity of 0.036 W/m×K
- High tensile strength of at least 0.35 N/mm²
- Modifiable delivery formats for a multitude of applications

Fields of application

- Fire-rated glazing systems as thermal insulation
- Sealing material for industrial and household appliances
- Additional insulation for aluminium holding furnaces
- Expansion joints

Features

KERAFIX® 2000 has a bio-soluble composition that offers a safe and efficient solution for high-temperature applications.

Technical data

Verification	abP P-3074/3439-MPA-BS: 15 March 2021
Composition	Insulating construction material based on a calcium-magnesium-silicate chemical mix
Material structure	Light, flexible and compressible roll material
Temperature stability [°C]	1200
Thermal conductivity [W/(m×K)]	0.036
Tensile strength [N/mm²]	0.35
Bulk density [kg/m³]	200 – 300
Surface finish	Smooth surface
Storage	In a dry location indoors

Design variants

- KERAFIX® 2000 without additional lamination
- KERAFIX® 2000 classic: white/black; self-adhesive
- KERAFIX® 2000 premium: white; with internal self-adhesive strip for quick and easy installation

Colour variants

White, black

Processing information

1. Surface preparation:
- The surfaces must be clean, dry and free from dust, grease and oil to ensure optimum adhesion.
2. Application:
- The product is cut and trimmed with conventional tools. Make sure the dimensions are exact.
  - When using the self-adhesive variant of KERAFIX® 2000, remove the protective film just before installation. Apply the tape with even pressure.

Delivery forms: classic

Roll length [mm]	10,000
Standard widths [mm]	10 – 1000
Standard thicknesses [mm]	classic (white): 1 – 10 classic (black): 2 – 6

Delivery forms: premium

Roll length [mm]	Thickness [mm]	Width [mm]
10,000	6	From 10 mm to 1000 mm
10,000	5	
26,000	2	
27,000	4	
35,000	3	

Tolerances [mm]

All cuts (length × width) are produced in accordance with the general tolerance DIN ISO 2768-1-c.

All moulded parts and punched parts are produced in accordance with the general tolerance DIN 7715-5-p2.

## Contact:

### **KuhnOdice Germany GmbH**

Gluesinger Strasse 86

21217 Seevetal

Germany

+49 4105 4090-14

[info@kuhnodice.com](mailto:info@kuhnodice.com)

[kuhnodice.com](http://kuhnodice.com)

**For enquiries from Greece, please contact**

### **ELNOVIS Electrical SP IKE**

16 Agriniou str.

177 78 Tavros

Greece

+30 210 4821 100

[sales@elnovis.com](mailto:sales@elnovis.com)

[elnovis.com](http://elnovis.com)