



KJ Smart

Berth light with switch, slim design, ideal for pullman berths

The **KJ Smart** berth light is designed to bring modern convenience and comfort to pullman cabins. With its slim polycarbonate housing in black or white and an opal diffuser, it creates soft, glare-free illumination that enhances any interior. An integrated on/off switch ensures simple operation, while optional dual USB ports allow effortless charging of mobile devices. A clever built-in shelf provides the perfect spot to rest a smartphone or other small essentials, adding functionality without taking up extra space. Built in line with maritime classification standards, the KJ Smart combines lighting, charging, and storage in one streamlined solution.

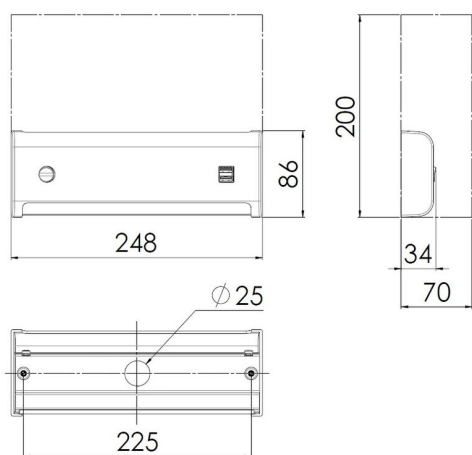
Technical Details

Possible combinations of features and other options available on request. Please contact us for more information.

Luminaire Type	Wall Luminaire
Input Voltage	230 VAC / 110 - 240 VAC / 24 VDC
Area	Indoor
Application	Cruise / Offshore / Naval / Commercial
Frequency	50-60 Hz / 0 Hz
Wattage	1x 3 W
Lumen Output	250 lm
Color Temperature	3000 K / 4000 K / 5700 K / 6500 K / Red / Green / Blue
CRI Color Rendering Index	80 / 90
Control Mode	Integrated on-off switch

Cover / Diffusor	Opal polycarbonate
Material of Housing	Polycarbonate
Color of Housing / Ring	Black / White
Type of Light Source	LED
Light Source Included	Yes
Cable Entry	Hole 25 mm
Type of Connection	Terminal 3-pole, 2.5mm ²
Mounting Type	Mounting holes
IP Class	IP20
Ambient Temperature in °C	-25 ... +35
Features	2x USB Charger, 5V/2A / Shock-proof

Images



[mm]
maintenance area