



# DL100

## Flat LED downlight for bathrooms and accommodation areas

The **DL100** from LightPartner is an ultra-flat recessed downlight ideally suited for bathrooms, cabins, and onboard accommodations. Encased in a galvanized-steel frame with a discreet decorative ring and finished with an opal polycarbonate diffuser, it offers a clean, low-profile presence that integrates seamlessly into narrow ceiling spaces. The DL100 delivers gentle, warm illumination with high color rendering, and mounts easily using spring fittings for ceilings up to 10 mm thick. Rated **IP44** and compliant with maritime classification standards, it ensures reliable performance in damp environments. With flexible customization options—such as alternative finishes, color temperatures, connector types, and driver units—it adapts precisely to varied project requirements.

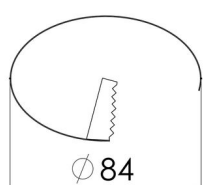
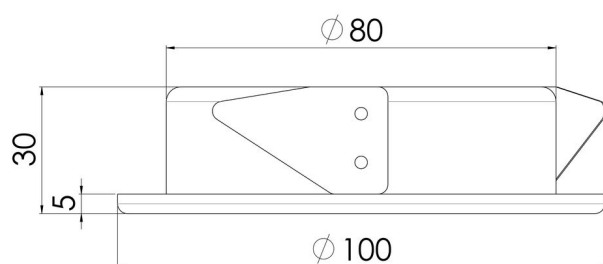
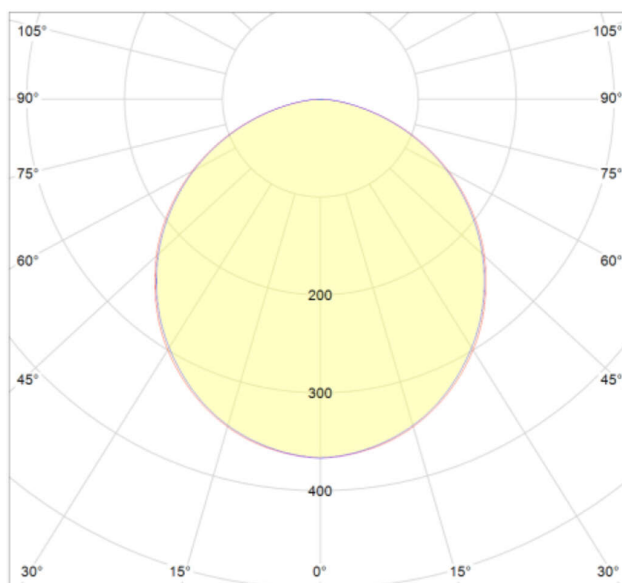
## Technical Details

Possible combinations of features and other options available on request. Please contact us for more information.

Luminaire Type	Downlight
Input Voltage	110 - 240 VAC / 24 VDC (LED driver not included)
Area	Indoor
Application	Cruise / Offshore / Naval / Commercial
Frequency	50-60 Hz / 0 Hz
Wattage	1x 3 W
Lumen Output	220 lm
Color Temperature	3000 K / 4000 K / 5700 K / 6500 K / Red / Green / Blue
CRI Color Rendering Index	80 / 90
Control Mode	Switchable / Dimmable

Cover / Diffusor	Polycarbonate opal
Material of Housing	Galvanized Steel
Color of Housing / Ring	RAL / NCS colors
Type of Light Source	LED
Light Source Included	Yes
External Wiring	Cable 150 mm
Type of Connection	Plug 2-pole
Mounting Type	Springs
IP Class	IP44
Ambient Temperature in °C	-25 ... +45
Cut Out in mm	84 mm

## Images



[mm]