



DL90 A

Adjustable downlight, recessed mounting, indoor use

The **DL90A** is a compact, recessed spotlight that brings focused illumination to cabins, corridors, or public areas aboard ships. Its sturdy aluminum housing and elegant decorative ring—in finishes such as white, chrome, brushed steel, gold, or black—blend seamlessly into interiors. The adjustable light head accommodates GU5.3 or GU10 lamps (max. 35 W), allowing tailored light direction. Designed for ceiling thicknesses up to 20 mm, with spring-clip mounting and a 12 V system requiring a transformer or driver, it ensures precise, customizable illumination that aligns with maritime classification standards, while remaining lightweight.

Technical Details

Possible combinations of features and other options available on request. Please contact us for more information.

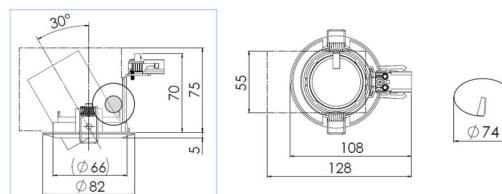
Luminaire Type	Downlight
Input Voltage	110 - 240 VAC / 24 VDC (LED driver not included)
Area	Indoor
Application	Cruise / Offshore / Naval / Commercial
Frequency	50-60 Hz / 0 Hz
Wattage	GU10 / GU5.3 max. 35 W
Control Mode	Switchable / Dimmable
Material of Housing	Aluminium

Color of Housing / Ring	White / Chrome / Gold / Black / Steel brushed
Type of Light Source	LED lamp
Light Source Included	No
Type of Connection	Plug 2-pole
Mounting Type	Springs
IP Class	IP20
Ambient Temperature in °C	-25 ... +45
Cut Out in mm	74 mm
Features	Additional housing

Images



DL90A



DL90A POT

