



KJ15

Berth light with switch and swiveling reflector for installation in accommodation areas

The **KJ15** from LightPartner is a sleek berth light crafted for accommodation areas and cabins, combining minimalist elegance with functionality. It features a swiveling reflector, discreet integrated switch, and a powder-coated steel housing that integrates seamlessly into marine interiors. For environments demanding extra resilience—such as naval or military applications—a shock-proof “navy” variant is available, engineered to withstand intense mechanical impacts while maintaining reliable illumination. With flexible power options and color temperature choices, the KJ15 adapts effortlessly to varying onboard lighting needs.

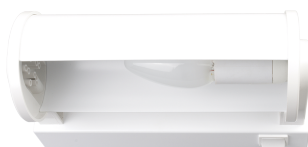
Technical Details

Possible combinations of features and other options available on request. Please contact us for more information.

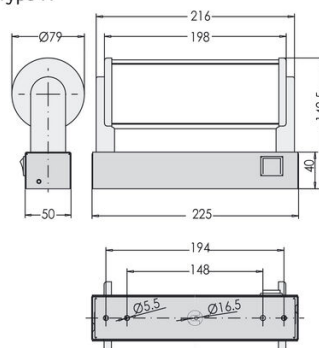
Luminaire Type	Wall Luminaire
Input Voltage	230 VAC / 120 VAC / 24 VDC
Area	Indoor
Application	Cruise / Offshore / Naval / Commercial
Frequency	50-60 Hz / 0 Hz
Wattage	E27 max. 40 W
Control Mode	Integrated on-off switch
Cover / Diffusor	Opal polycarbonate, impact-proof
Material of Housing	Galvanized Steel

Color of Housing / Ring	RAL / NCS colors
Type of Light Source	LED Lamp
Light Source Included	No
Cable Entry	1x Grommets
External Wiring	Ø 6 - 13 mm
Type of Connection	Terminal 3-pole, 2.5mm ² / 4mm ²
Mounting Type	Mounting holes
IP Class	IP20/44
Ambient Temperature in °C	-25 ... +45
Features	Shock proof / EMI proof / Socket

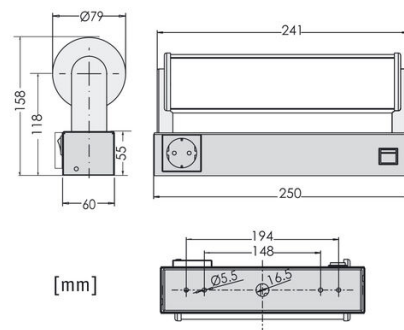
Images



Type A



Type B with socket



[mm]